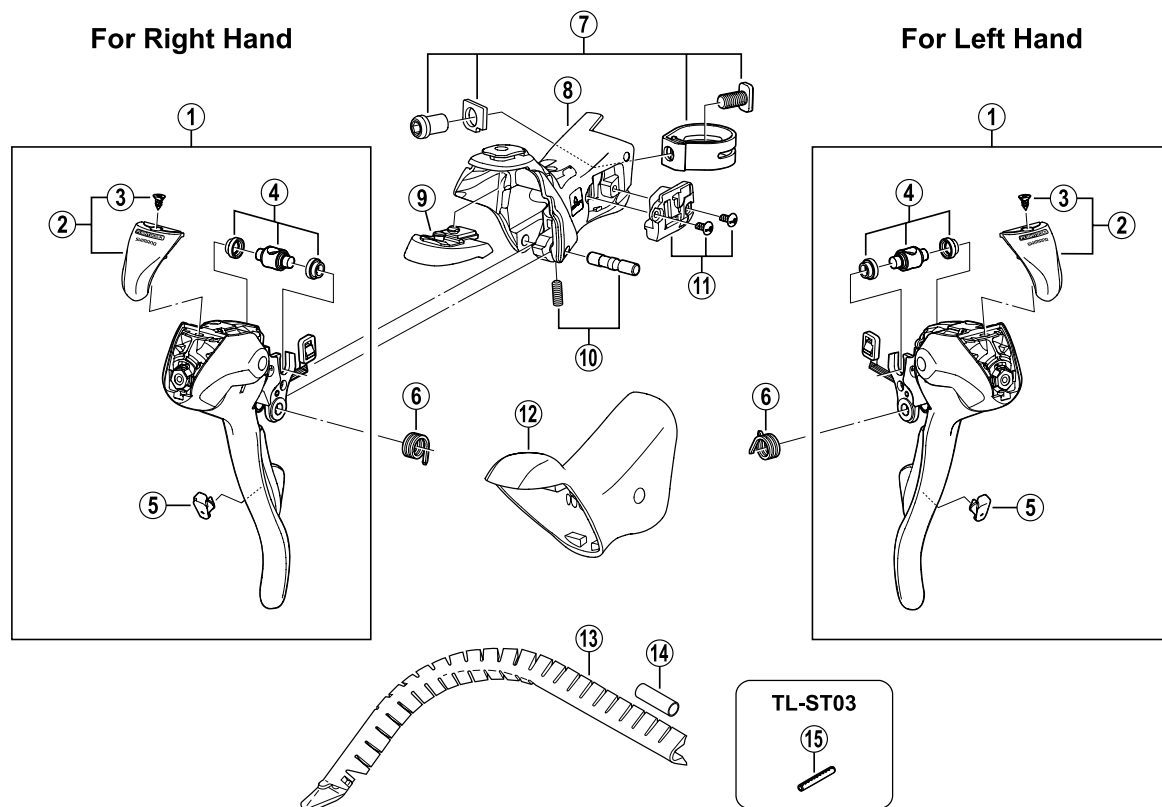


Dual Control Lever

ST-R700 FLIGHT DECK Compatible



ITEM NO.	SHIMANO CODE NO.	DESCRIPTION
1	Y-6KK98010	R.H. Main Lever Assembly
	Y-6KK98020	L.H. Main Lever Assembly
2	Y-6KK98030	Name Plate & Fixing Screw
3	Y-6K2 19000	Name Plate Fixing Screw
4	Y-6CU98050	Cable Hook Unit
5	Y-6K2 18000	R.H. Release Lever Support
	Y-6K2 64000	L.H. Release Lever Support
6	Y-6K2 87000	R.H. Return Spring
	Y-6K2 87100	L.H. Return Spring
7	Y-6K2 98060	Clamp Band Unit (φ 23.8 mm – φ 24.2 mm)
8	Y-6KK98040	R.H. Bracket
	Y-6KK98050	L.H. Bracket
9	Y-6KK02000	R.H. Adjustment Block (8°)
	Y-6KK52000	L.H. Adjustment Block (8°)
	Y-6KK03000	R.H. Adjustment Block (4°)
	Y-6KK53000	L.H. Adjustment Block (4°)
10	Y-6KD98060	Lever Axle & Fixing Screw
11	Y-6JA 98080	R.H. Water-Proof Cap & Fixing Screws (M2.6 x 6)
	Y-6JA 98090	L.H. Water-Proof Cap & Fixing Screws (M2.6 x 6)
12	Y-6K2 98100	Bracket Covers (Pair)
13	Y-86B 90010	Outer Cable Guide
14	Y-877 11000	Outer Cable Joint
15	Y-130 03200	Return Spring Installation Tool (TL-ST03)

0504-2445